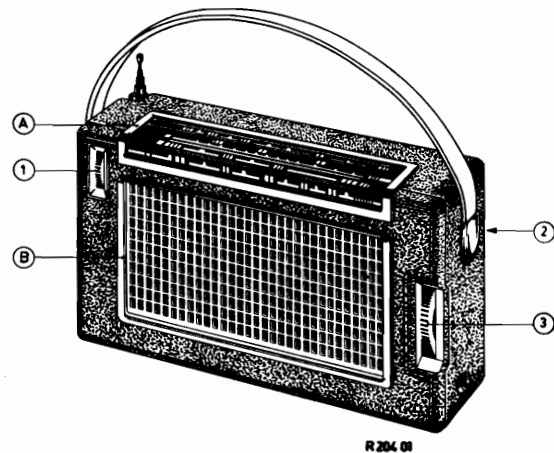


PHILIPS Service

RADIO

L2X22T/00/03



| CONTROLS | BEDIENING | BEDIENUNG | COMMANDE | MANDOS |
|---------------------------------|-----------------------------------|------------------------------------|-----------------------------------|------------------------------------|
| Volume control + battery switch | 1 Volumeregelaar + batterijschak. | Lautstärkeregl. + Batterieschalter | Contrôle de volume + interrupteur | 1 Control de volumen + interruptor |
| Wave range switch | 2 Golfgebiedschak. | Wellenbereichschalter | Comm. des gammes | 2 Conn. de márgenes |
| Tuning | 3 Afstemming | Abstimmung | Syntonisation | 3 Sintonía |

| Specification | Specificatie | Spezifikation | Specification | Especificación | | |
|---------------|--------------------------------|------------------|------------------|----------------|--------------------------------|--------------------|
| Loudspeaker | AD3207ZD(3 Ω) | Luidspreker | Lautsprecher | Haut-parleur | AD3207ZD(3 Ω) | Altavoz |
| I.F. | AM : 452 kc/s FM : 6,75Mc/s | M.F. | ZF | F.I. | AM : 452 kc/s FM : 6,75Mc/s | F.I. |
| Battery | 6 V (4x1,5 V) | Batterij | Batterie | Batterie | 6 V (4x1,5 V) | Batería |
| Consumption | 25 mA (50 mW) | Verbruik | Verbrauch | Consommation | 25 mA (50 mW) | Consumo |
| Output | 100 mW | Uitgangsvermogen | Ausgangsleistung | Puissance | 100 mW | Potencia de salida |
| Dimensions | 171x98x42,5mm | Afmetingen | Abmessungen | Dimensions | 171x98x42,5mm | Dimensiones |

Wave ranges - Golfgebieden - Wellenbereiche - Gamme d'ondes - Márgenes de ondas

| | | |
|-------------------------|-----------------|--------------------|
| LW - LG - LW - GO - OL | : 2000 - 1137 m | (150 - 262 kc/s) |
| MW - MG - MW - PO - OM | : 580 - 185 m | (517 - 1612 kc/s) |
| FM - FM - UKW - FM - FM | : 3,43 - 2,88 m | (87,5 - 104 Mc/s) |

| Transistors : | TS1 - AF114 | TS5 - AF116 | GR1 - 0A90 |
|---------------|-------------|---------------|---------------|
| | TS2 - AF115 | TS6 - 0C75 | GR2) - 2-0A79 |
| | TS3 - AF116 | TS7) - 2-0C74 | GR3) - 2-0A79 |
| | TS4 - AF116 | TS8) - 2-0C74 | GR4 - 0A79 |

| SERVICE INFORMATION | | | | | | | | | |
|---------------------|--|--|--|--|--|--|--|--|--|
| | | | | | | | | | |

L2X22T

| Serv-o-mecum E-a-1 E-a-2 E-a-3 | Wave range switch Golfgebiedschak. Wellenbereichsch. Comm. des gammes Conn. de márgenes | Varco Varco Drehko Cond. var. Cond. var. | Signal Signaal Signal Signal Señal | Adjust Afregele Abgleichen Régler Ajustense | Indication Aanwijzing Anzeige Indication Indicacion |
|---|---|--|--|---|---|
| IF-circuits MF-kringen ZF-Kreise (AM) Circuits FI Circuitos de FI | I | min. | 452 kc/s via 33000 pF b-TS3 | S28, S23, S20 | |
| RF-circuits HF-kringen HF-Kreise (AM) Circuits HF Circuitos de RF | I | max. | 512 kc/s | S16 | max. output max. uitg. spanning max. Ausg. Spannung max. de sortie max. de salida |
| | | min. | 1640 kc/s | C18 | |
| | 600 kc/s | 600 kc/s | S12 | | |
| | 1500 kc/s | 1500 kc/s | C17 | | |
| II | max. | 145 kc/s | C23 | | |
| | 170 kc/s | 170 kc/s | S14 | | |
| | 240 kc/s | 240 kc/s | C22 | | |
| IF-circuits MF-kringen ZF-Kreise (FM) Circuits FI Circuitos de FI | III | 93 Mc/s | 6,75 Mc/s via 1500 pF b-TS5 | S25 | max. D.V. |
| | | | 6,75 Mc/s via 1500 pF b-TS4 | S21 | max. D.V. |
| | | | 6,75 Mc/s via 1500 pF b-TS3 | S18 | max. D.V. |
| | | | 6,75 Mc/s via 1500 pF b-TS2 | S11, S8 | max. D.V. |
| RF-circuits HF-kringen HF-Kreise (FM) Circuits HF Circuitos de RF | III | 88 Mc/s | 88 Mc/s | S7 | max. output max. uitg. spanning max. Ausg. Spannung max. de sortie max. de salida |
| | | 93 Mc/s | 93 Mc/s | S5 | |

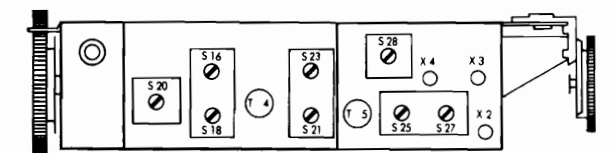
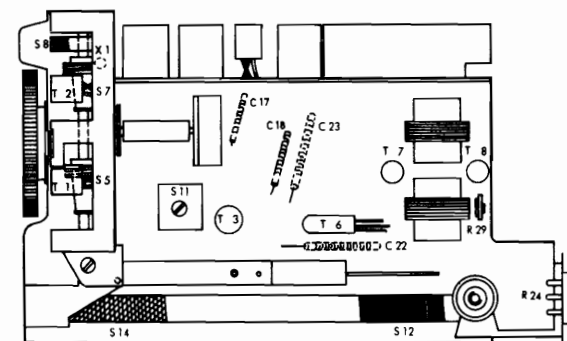
The collector current of both final transistors should be adjusted to 8 mA with the adjusting potentiometer R29.

De collectorstroom van beide eindtransistoren dient men met de instelpotentiometer R29 op 8 mA in te stellen.

Der Kollektorstrom beider Endtransistoren ist mittels Einstellregler R29 auf 8 mA zu bringen.

Le courant de collecteur des deux transistors finaux doit être ajusté avec le potentiomètre d'ajustage R29 à 8 mA.

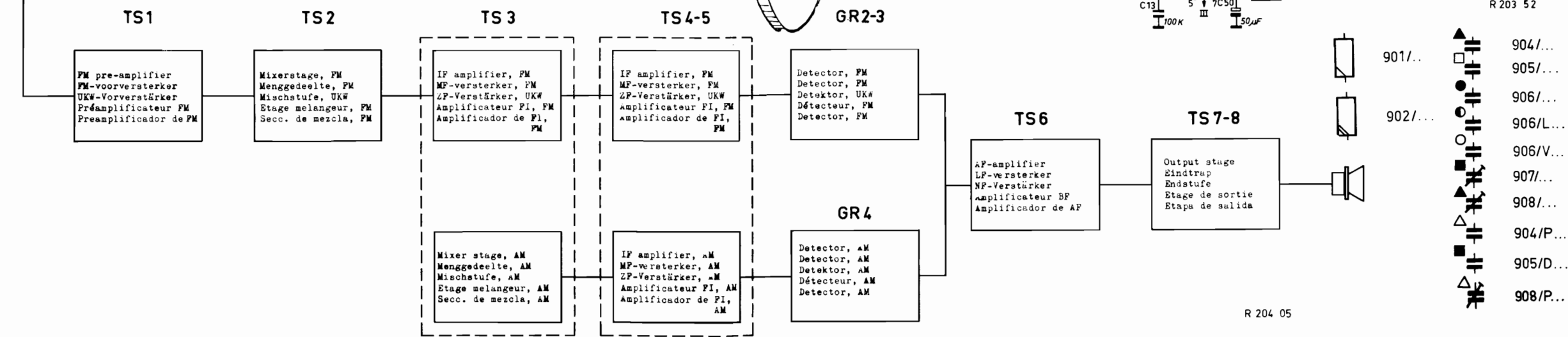
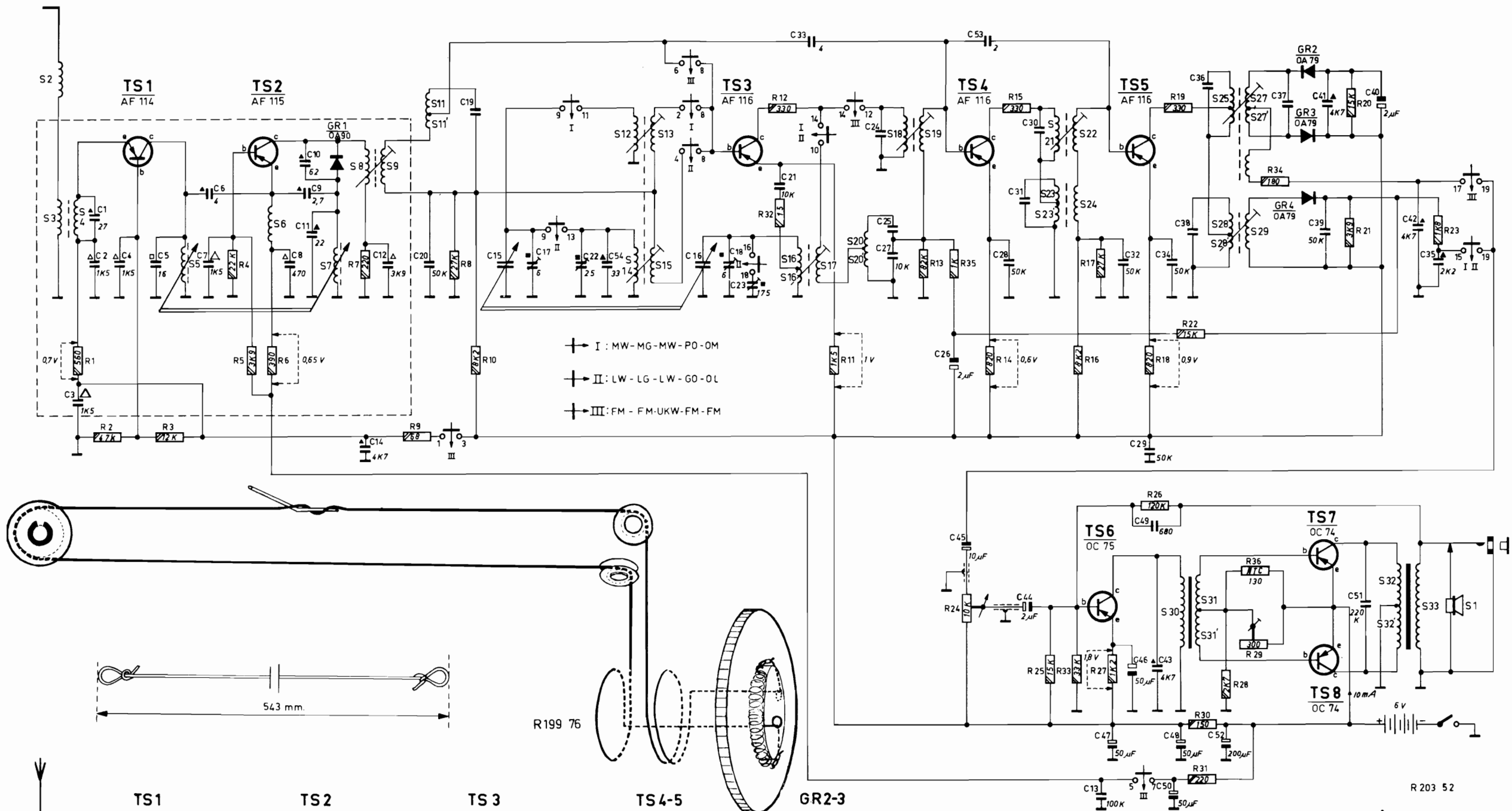
La corriente de colector de los dos transistores de salida debe ajustarse a 8 mA con el potenciómetro de ajuste R29.



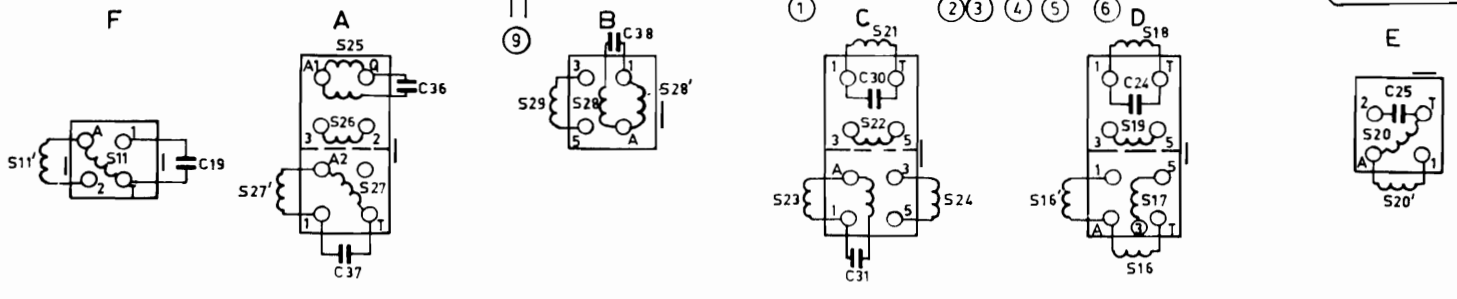
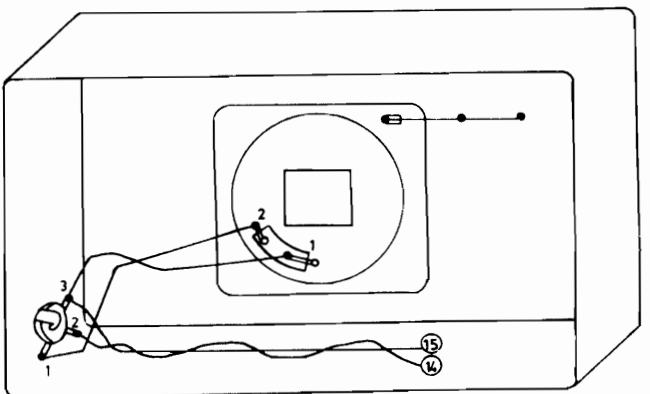
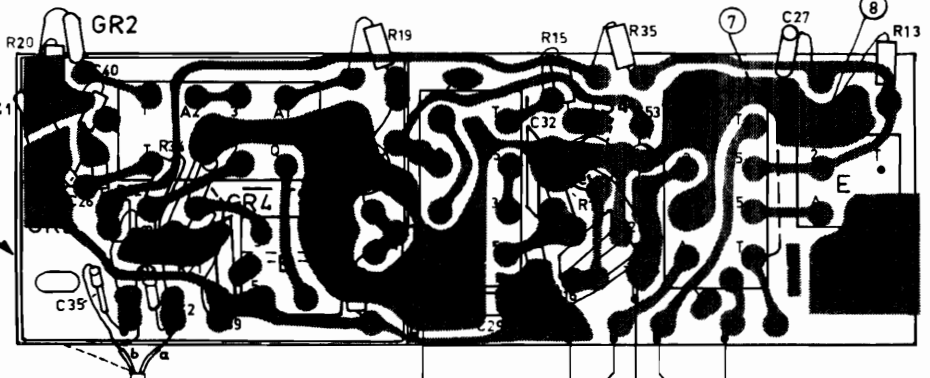
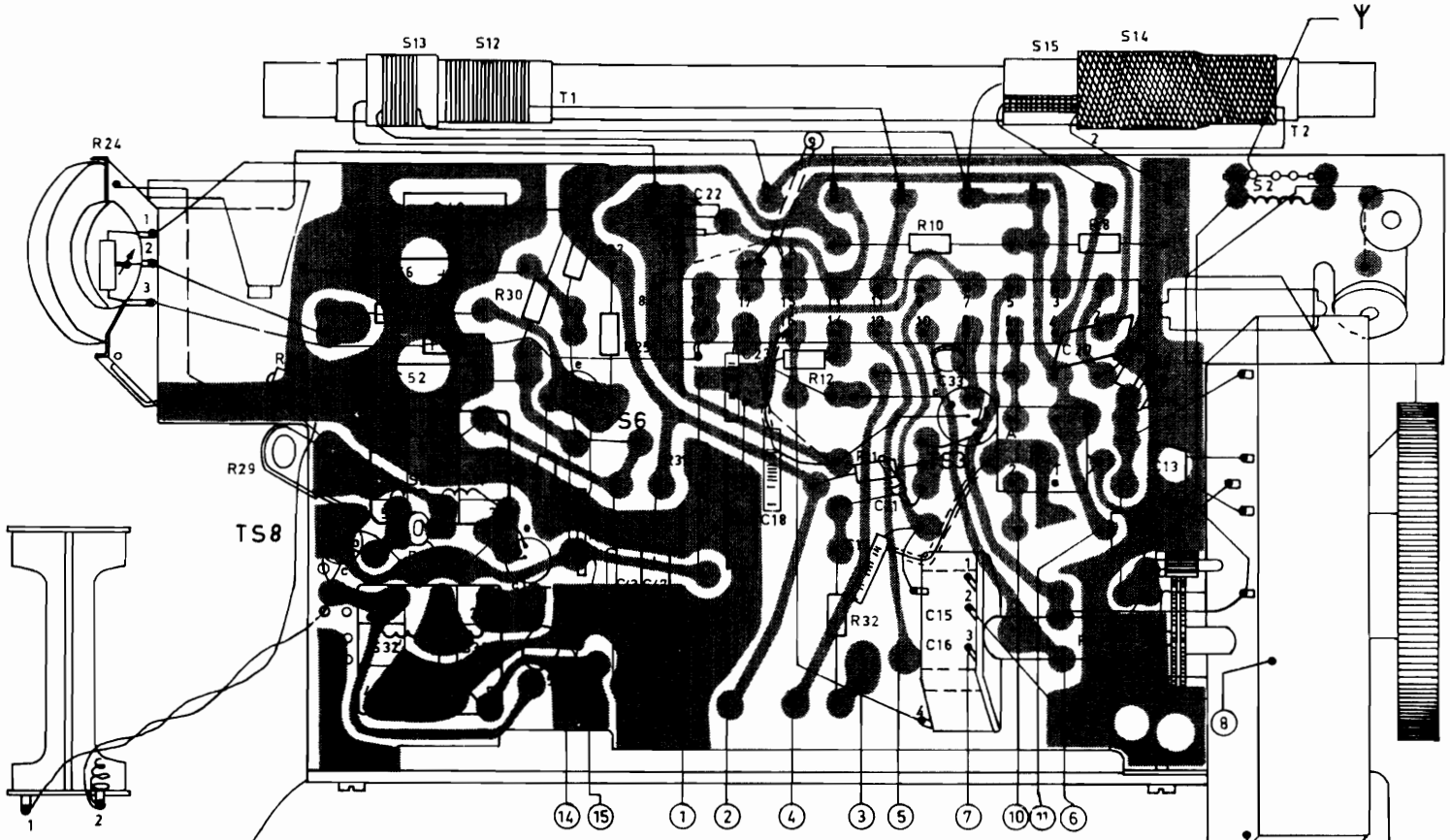
R 204 06

L2X22T

| | | | | | | | | | | | | | | | | | | | | | | |
|---|------------|---|---------|-----------|-------|-------|--------|-------------|--------|--------|--------|-----------|----------|-----------|-------------|-----------|-------------------------------------|--------|-------|--------|----|----|
| S | 2,3,4 | 5 | 6 | 7 | 8 | 9 | 11,11' | 12,14,15,13 | 16,16' | 17 | 20,20' | 18 | 19 | 21,23,23' | 22,24 | 30,31,31' | 25,28,28',27,27',29 | 32,32' | 33,1 | | | |
| C | 3, 1, 2, 4 | 5 | 7,6 | 8,9,10,11 | 14,12 | 20 | 19 | 15,17 | 22,54 | 16 | 18,23 | 21,33 | 24,25,27 | 26,45,53 | 28,31,44,30 | 13 | 47,29,32,46,49,43,34,50,38,48,36,52 | 37 | 39,41 | 51,40 | 42 | 35 |
| R | 1, 2 | 3 | 4, 5, 6 | 7 | 9 | 8, 10 | 32, 12 | 11 | 13 | 24, 35 | 14, 15 | 25, 33,16 | 17,27 | 18,26 | 19 | 22, 30 | 28, 29 | 36 | 34 | 20, 21 | 23 | |

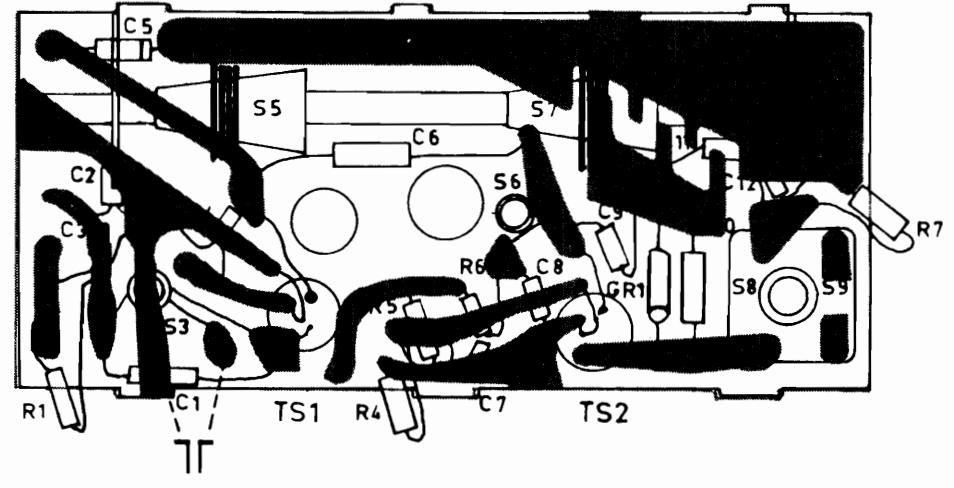


| | | | | | | | | | | | | | | | | | | | | | | | | | | |
|---|-----|-----|-----|-------|-------|--------|--------|--------|--------|--------|-------|-------|-------|-------|-------|-------|-------|-------|-------|-------|-----|-----|-----|-----|-----|-----|
| S | 11' | 11. | 27' | 25 26 | 27. | 30 31' | 31 32' | 32 33' | 33 34' | 34 35' | 29. | 28. | 28' | 23 21 | 22. | 24. | 16' | 15 18 | 19 17 | 16 | 14. | 2. | 20. | 20' | | |
| C | | 19. | | 37 | 36 41 | 26 35 | 40 48 | 46 44 | 45 39 | 38 51 | 49 43 | 47 22 | 54 34 | 23 50 | 30 31 | 32 18 | 17 | 21 28 | 53 33 | 15 16 | 24. | 20. | 27. | 14. | 13. | 25. |
| R | | 24. | 29. | 28. | 20. | 22 23 | 34. | 30 33 | 21 27 | 26. | 25. | 19 31 | 18. | 12. | 15. | 16 17 | 11 32 | 14 35 | 10. | 8. | 2. | 3. | 9. | 13. | | |



R203 74

| | | | | |
|---|------------|-------------------|-----|---|
| R | 1, | 4, 5, 6, | 7 | R |
| C | 3 2 5 1 4, | 6 7 8 9 11 10 12, | | C |
| S | 4 3 5, | 6 7, | 8 9 | S |



R199 94 A

L2X22T

| | | | | | | |
|---|------------------------|---|---|--|------------------------|--|
| Cabinet, front part 00-brown 03-black | WE 731 73 WE 731 96 | Kast, voorzijde 00-bruin 03-zwart | Gehäuse, Vorderteil 00-braun 03-schwarz | Coffret, partie frontale 00-brun 03-noir | WE 731 73 WE 731 96 | Caja, parte frontal 00-marrón 03-negro |
| Rear cover 00-brown 03-black | WE 346 96 WE 347 00 | Achterwand 00-bruin 03-zwart | Rückdeckel 00-braun 03-schwarz | Couvercle arrière 00-brun 03-noir | WE 346 96 WE 347 00 | Cubierta posterior 00-marrón 03-negro |
| Handle-00 Handle-03 | WE 761 03 WE 761 07 | Handgreep-00 Handgreep-03 | Handgriff-00 Handgriff-03 | Poignée-00 Poignée-03 | WE 761 03 WE 761 07 | Asa-00 Asa-03 |
| Battery holder | WE 340 07 | Batterijhouder | Batteriebehälter | Porte-pile | WE 340 07 | Porta-pila |
| Female plug, earphone | WE 403 16 | Contraplug, oortelefoon | Kontrastecker, Kopfhörer | Douille écouteur | WE 403 16 | Hembrilla de auricular |
| Nut, fixing WE 403 16 | WE 580 10 | Moer, bev. WE 403 16 | Mutter, Bef. WE 403 16 | Ecrou, fix. WE 403 16 | WE 580 10 | Tuerca, fij. WE 403 16 |
| Aerial | WE 333 89 | Antenne | Antenne | Antenne | WE 333 89 | Antena |
| Ornamental window (A)-00 | WE 684 45 | Sierraam (A)-00 | Zierrahmen (A)-00 | Fenêtre enjoliveuse (A)-00 | WE 684 45 | Cuadro ornamental (A)-00 |
| Ornamental window (A)-03 | WE 684 49 | Sierraam (A)-03 | Zierrahmen (A)-03 | Fenêtre enjoliveuse (A)-03 | WE 684 49 | Cuadro ornamental (A)-03 |
| Loudspeaker grill (B)-00 | WE 340 54 | Luidsprekerrooster (B)-00 | Blende für Lautspr. (B)-00 | Grille de haut-parleur(B)-00 | WE 340 54 | Rejilla de altavoz (B)-00 |
| Loudspeaker grill (B)-03 | WE 340 55 | Luidsprekerrooster (B)-03 | Blende für Lautspr. (B)-03 | Grille de haut-parleur(B)-03 | WE 340 55 | Rejilla de altavoz (B)-03 |
| Screw, fixing handle | WE 580 13 | Schroef, bev. handgreep | Schraube, Bef. Handgriff | Vis, fix. poignée | WE 580 13 | Tornillo, fij. asa |
| Foot -00 | WE 745 39 | Voetje -00 | Fuss -00 | Pied -00 | WE 745 39 | Pie -00 |
| Foot -03 | WE 745 66 | Voetje -03 | Fuss -03 | Pied -03 | WE 745 66 | Pie -03 |
| Bracket (polystyreen) on chassis | WE 744 80 | Beugel (polystyreen) op chassis | Bügel (Polystyren) auf Chassis | Equerre (polystyrène) | WE 744 80 | Abrazadera (polistireno) en chasis |
| Roll (large) | WE 744 78 | Rol (groot) | Rolle (gross) | Rouleau (grand) | WE 744 78 | Rollo (grande) |
| Knob with potentiometer(1) | WE 367 09 | Knop met potentiometer(1) | Knopf mit Lautstärker(1) | Bouton avec potentiomètre(1) | WE 367 09 | Botón con control de volumen (1) |
| Slide button (2) | WE 744 43 | Schuifknop (2) | Schiebeknopf (2) | Bouton coulissant (2) | WE 744 43 | Botón deslizante (2) |
| Knob, tuning (3) | WE 744 42 | Knop, afstemming (3) | Knopf, Abstimmung (3) | Bouton, accord (3) | WE 744 42 | Botón, sintonía (3) |
| Nut on WE 744 43 | WE 580 00 | Moer op WE 744 43 | Mutter auf WE 744 43 | Ecrou sur WE 744 43 | WE 580 00 | Tuerca en WE 744 43 |
| Bracket with 2 rolls | WE 340 13 | Beugel met 2 rollen | Bügel mit 2 Rollen | Equerre avec 2 rouleaux | WE 340 13 | Abrazadera con 2 rollos |
| Bearing block for ferroceptor | WE 744 77 | Steenblok voor ferroceptor | Lager für Ferroceptor | Palier pour ferrocepteur | WE 744 77 | Rodamiento para ferroceptor |
| Plate behind dial | WE 745 43 | Plaat onder schaal | Platte unter Skala | Plaque derrière échelle | WE 745 43 | Placa bajo escala |
| Spring in driving cord | WE 646 27 | Veer in aandrijfkoord | Feder in Antriebsseil | Ressort en cordon d'entraînement | WE 646 27 | Resorte en cuerda de arrastre |
| Dial -00 (Eur) | WE 221 79 | Schaal -00 (Eur) | Skala -00 (Eur) | Cadran -00 (Eur) | WE 221 79 | Escala -00 (Eur) |
| Dial -03 (Eur) | WE 221 98 | Schaal -03 (Eur) | Skala -03 (Eur) | Cadran -03 (Eur) | WE 221 98 | Escala -03 (Eur) |

| | | | | | | |
|--------------------|---|--|---|---|---|--|
| S2 WE 114 25 | Coil Spoel Spule Bobine Bobina | S11 WE 122 04 | IF circuit, FM MF-kring, FM ZF-Kreise, FM Circuit de FI, FM Circuito de FI, FM | S25 S25' C36 S26 WE 122 13 S27 S27' C37 | Ratio detector Ratio detector Ratio detektor Detecteur de rapport Detector de relación | R26 C49 E 551 AA/61+34 C15 WE 347 03 C16 |
| S3 S4 A3 178 23 | Input coil Ingangspoel Eingangsspule Bobine d'entrée Bobina de entrada | S12 S13 WE 741 46 S14 S15 | Ferroceptor Ferroceptor Ferroceptor Ferrocepteur Ferroceptor | S28 S28' C38 WE 122 03 S29 | IF circuit, AM MF-kring, AM ZF-Kreise, AM Circuit de FI, AM Circuito de FI, AM | C13 WN 401 78 C20 WN 401 72 C26 909/U2 C27 WN 401 74 C28 WN 401 72 C29 WN 401 72 C32 WN 401 72 C33 C 808 BC/L4EB C34 WN 401 72 C39 WN 401 72 C40 909/U2 C44 909/U2 C45 909/W10 C46 909/C50 C47 909/C50 C48 909/C50 C50 909/C50 C51 WN 401 76 C52 909/W200 C53 C 306 AA/C2EB |
| S5 A3 265 82 | Intermediate circuit coil Tussenkringspoel Zwischenkreisspule Bob. de circuit intermédiaire Bob. de circuito intermediare | S16 S16' S17 WE 122 56 S18 C24 S19 | Oscillator circuit, AM- IF circuit, FM Oscillatorkring, AM-MF- kring FM Oszillatorkreise, AM- ZF-Kreise FM Circuit oscillateur AM- Circuit FI, FM Circuito de oscilador, AM-Circuito de FI, FM | S30 S31 WE 161 37 S31' | Driver transformer Ingangstransformator Treibertransformator Transformateur déphaseur Transformador de entrada | R24 WE 367 09 R29 WE 417 77 R36 E 201 BC/A130E |
| S6 A3 178 21 | Choke coil Smooerspoeel Drossel Self Bobina de choke | S20 S20' WE 122 02 C25 | IF circuit, AM MF-kring, AM ZF-Kreise, AM Circuit de FI, AM Circuito de FI, AM | S32 S32' WE 151 87 S33 | Output transformer Uitgangstransformator Ausgangstransformator Transformateur de sortie Transformador de salida | C21 WN 401 74 |
| S7 A3 265 83 | Oscillator coil, FM Oscillatortspoeel, FM Oszillatortspule, FM Bob. d'oscillateur, FM Bob. de oscilador, FM | S21 C30 S22 S23 WE 122 18 S23' C31 S24 | IF circuit, AM-FM MF-kring, AM-FM ZF-Kreise, AM-FM Circuit de FI, AM-FM Circuito de FI, AM-FM | A3 265 80 | FM-unit FM-eenheid UKW-Einheit Unité FM Unidad de FM | |
| S8 S9 A3 178 22 | IF coil MF-spoel ZF-Spule Bobine de FI Bobina de FI | | | | | |

